



Adults Sharing the Road:

Driving
Safely
Around
Trucks

DRIVING AROUND TRUCKS can be intimidating.

They're very big and don't handle like cars. Once you understand the capabilities and limitations of trucks, you



can more safely share the road with them. It's important to remember that because commercial vehicles are larger and heavier than cars, they can't slow down or speed up as quickly. They also need more space to complete turns.

This booklet has been designed to teach drivers what they need to know when driving around large trucks. Once you understand a few simple rules, you'll be ready to react to situations around trucks.



**COVERED
INSIDE:**

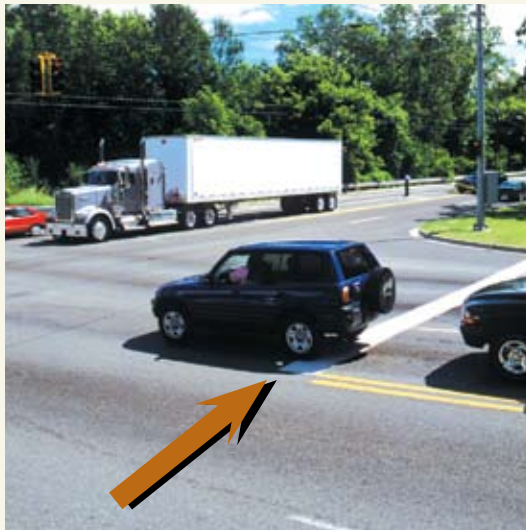
- Left Turns
 - Blind Spots & No Zones
 - Wide Right Turns
 - Merging
 - Exiting
-

LEFT TURN

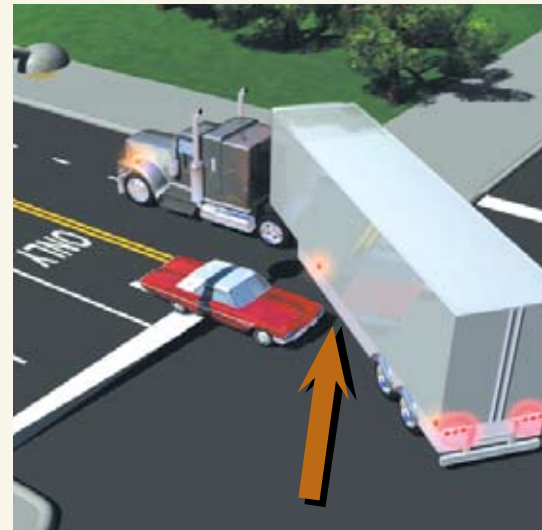
IF YOU ARE THE FIRST VEHICLE to arrive at an intersection with a traffic signal or stop sign, stay behind the white stopping line. Trucks need the space in front of the line to safely complete turns.



THE WRONG WAY



WRONG: Your car should **NOT** be over the white stopping line.

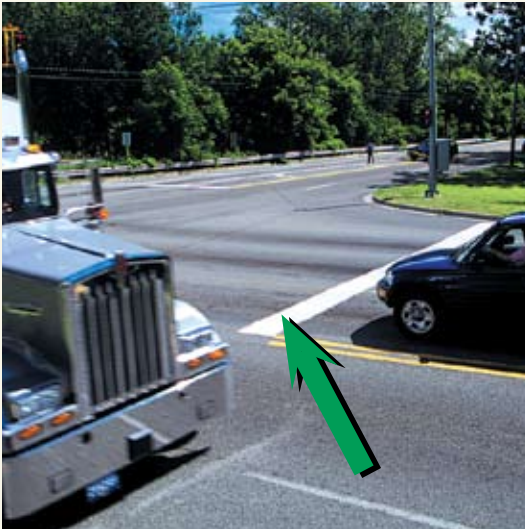


The truck **WON'T** have enough space to complete a safe turn. Your car may collide with the truck.

LEFT TURN

LEFT TURN

! THE RIGHT WAY !



RIGHT: Stop behind the white stopping line.



This **ALLOWS** the truck to have enough room to make a safe left turn.

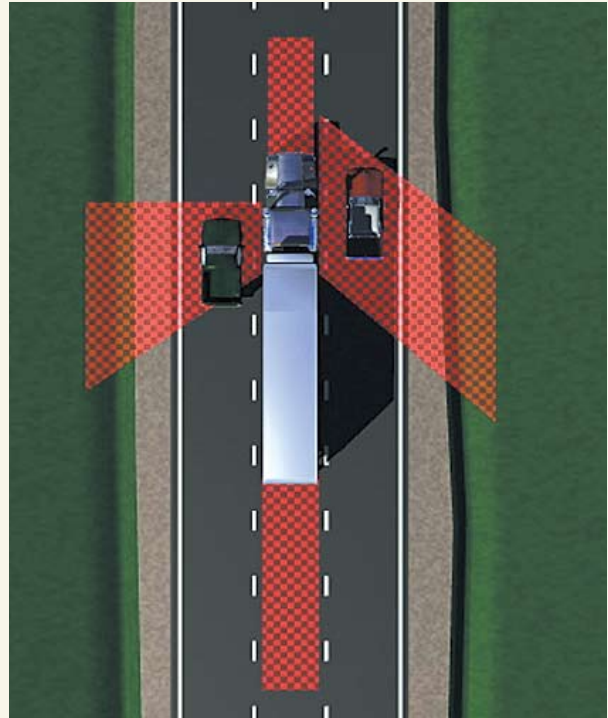
BLIND SPOTS and NO ZONES

TRUCK DRIVERS are unable to see your vehicle in blind spots. Stay out of these "no zones" whenever possible and move through them quickly when necessary.

BLIND SPOTS

A truck has **FOUR BLIND SPOTS** that you should avoid when possible:

- Left side
- Right side
- Front
- Back



NO ZONE

BLIND SPOTS and NO ZONES

If **YOU CAN'T SEE** the truck driver in his mirrors, **HE CAN'T SEE** you.

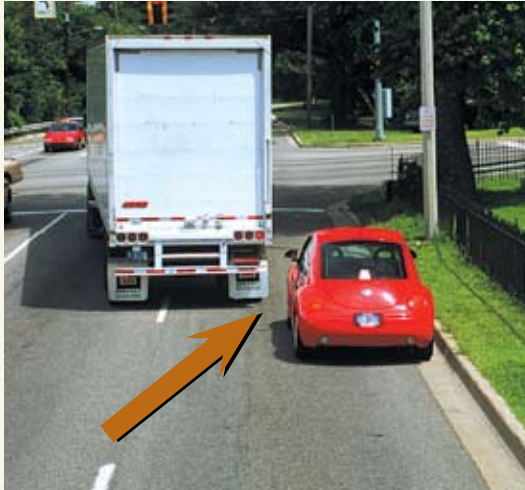


TRUCKS MAKE WIDE RIGHT TURNS.

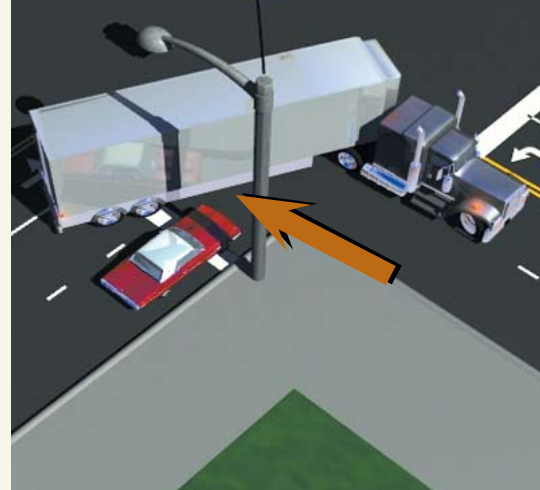
When approaching an intersection, check for turn signals and the position of the truck. If a truck driver indicates a right turn, stay back. Don't try to squeeze by on the right.



THE WRONG WAY



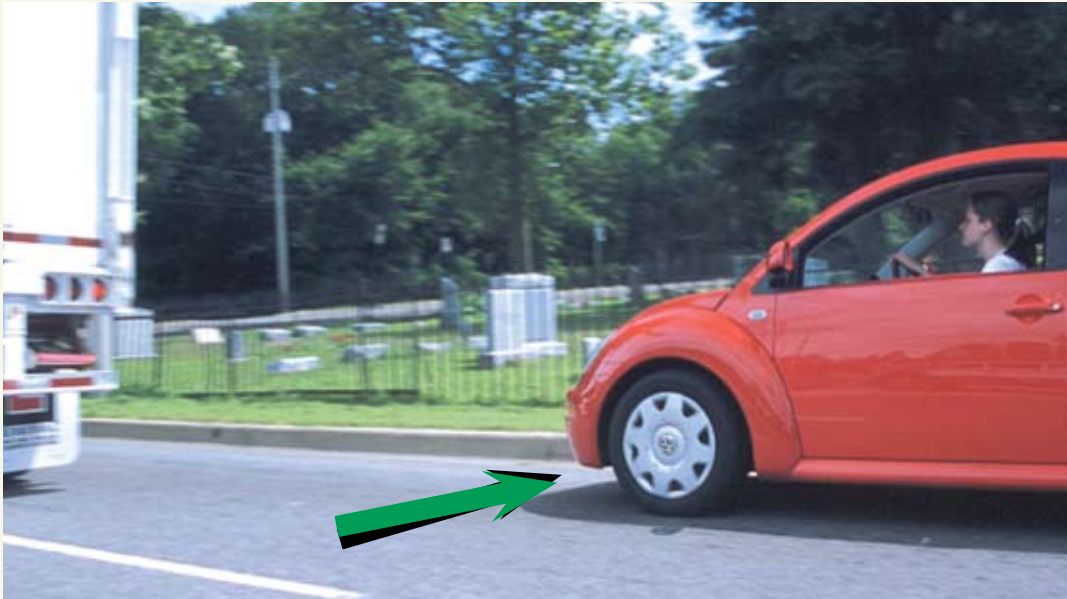
WRONG: Do **NOT** sneak into the right lane next to the truck. The truck needs to swing wide to avoid running over the curb or hitting a lightpole.



A truck **DOES NOT** have enough space to complete a safe right turn when a car sneaks up into the right lane. A collision may result.

WIDE RIGHT TURN

! THE RIGHT WAY !

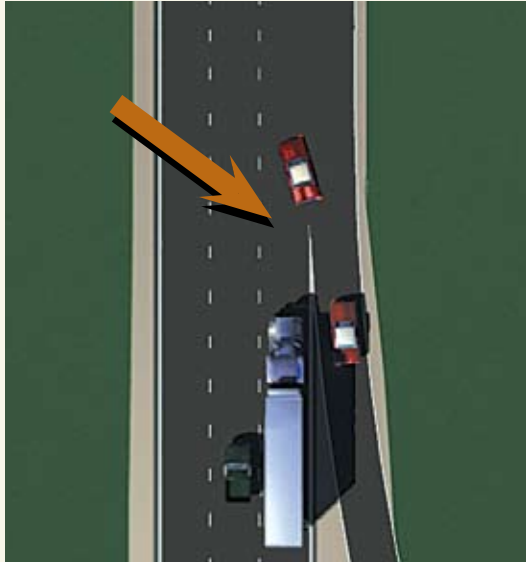


RIGHT: Stay back behind the truck.

WHEN MERGING INTO TRAFFIC, pick your spot and go. Move with the flow of traffic as closely as possible.

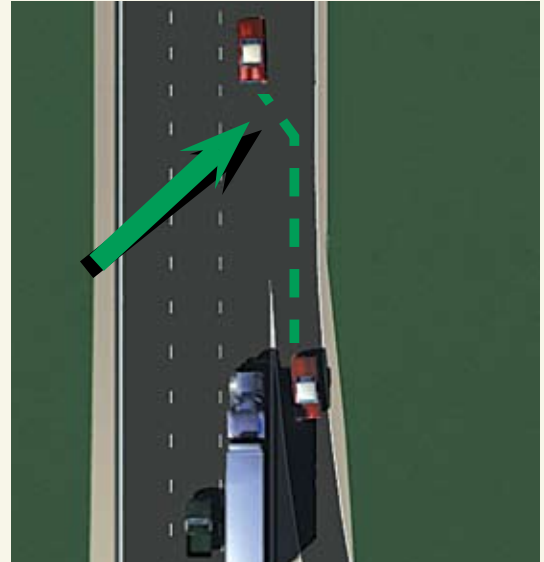


THE WRONG WAY



WRONG: Don't make the mistake of not giving the truck enough room when merging into traffic. This can cause a collision.

! THE RIGHT WAY

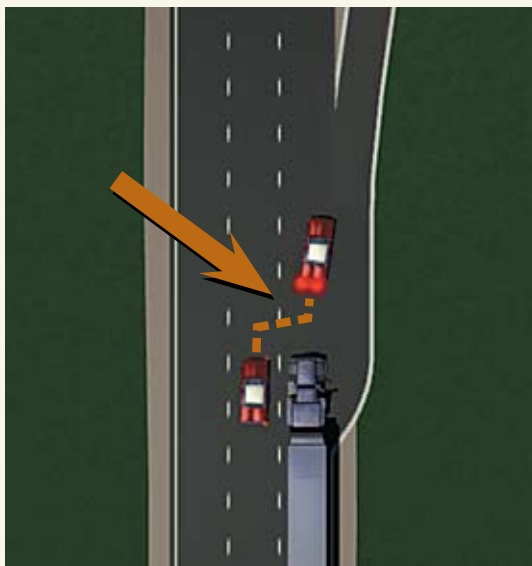


RIGHT: Pick your spot and go. Trucks can't slow down or accelerate as quickly as cars. Give them and yourself plenty of room.

WHEN EXITING, leave space between you and the vehicle behind you. Plan your move early and always signal your intentions as soon as possible.

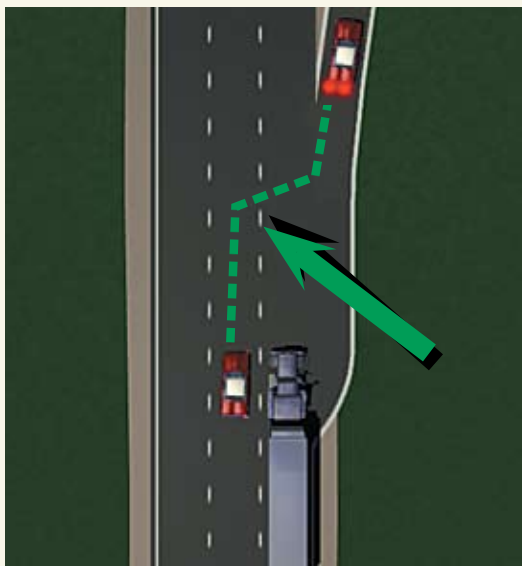


THE WRONG WAY



WRONG: Don't make the mistake of not giving the truck enough room when exiting the expressway. This can cause a collision.

! THE RIGHT WAY



RIGHT: Give trucks plenty of room when you are exiting the expressway. They can't slow down as quickly as cars.

IF YOU WOULD LIKE MORE INFORMATION about
sharing the road with trucks,
please give us a call or write:

Our Lansing office is:

Michigan Center for Truck Safety

1311 Centennial Way, Suite 2
Lansing, MI 48917-9280

Phone number:

(800) 682-4682 or (517) 321-1955

Our Upper Peninsula Office:

Michigan Center for Truck Safety

The Plaza Central
415 S. Stephenson Ave.
Iron Mountain, MI 49801

Phone number:

(800) 469-7364 or (906) 779-2211



Or visit us on the web at www.truckingsafety.org

Funded by a grant from the Michigan Truck Safety Commission.